



L A S E R F I C H E [®] *WebLink*

***Illuminate
your
Archives
Instantly...***

*Publishing
your documents
on the Web
has never been easier!*

Illuminate Your Archives

As more and more people turn to the web for information, you want to be able to provide the documents they need. They need fast access to your office's documents and you need a little more freedom. How will you make your vast document archives available online quickly and effortlessly?

LaserFiche WebLink Lights the Way

The answer is LaserFiche WebLink. Now when people need to reference documents in your archives, they can look them up with their web browser instantly and independently – while you attend to other things.

High-Quality Printing

Once they have found a document, users can download and print a high-quality PDF file.

The Joy of Publishing

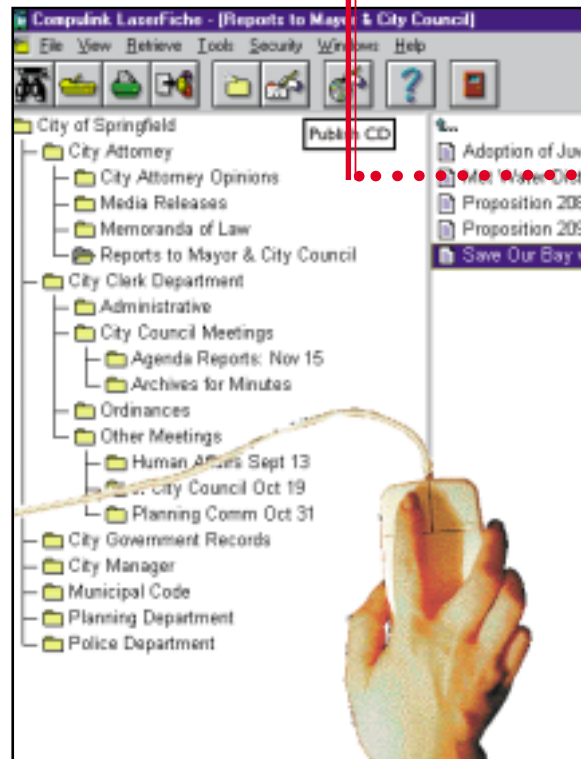
Scanned and archived documents appear instantly on the web without the need for time-consuming file conversions or HTML programming. The electronic courier takes on the role of publisher and dynamically transforms document pages into Web pages. You can match the look and feel of your existing site by customizing LaserFiche WebLink. The graphics, fonts, buttons, wallpaper and text can all be easily modified to meet your design criteria.

A Universal Solution

What makes LaserFiche WebLink a universal solution is its availability. It's designed to accommodate any browser. Any authorized person can view documents without needing extra plug-ins, the latest equipment, or the fastest Internet connections. LaserFiche WebLink makes your documents available to any Web-connected Mac, PC or workstation. Now that we've removed the boundaries from your publications, think of the possibilities!

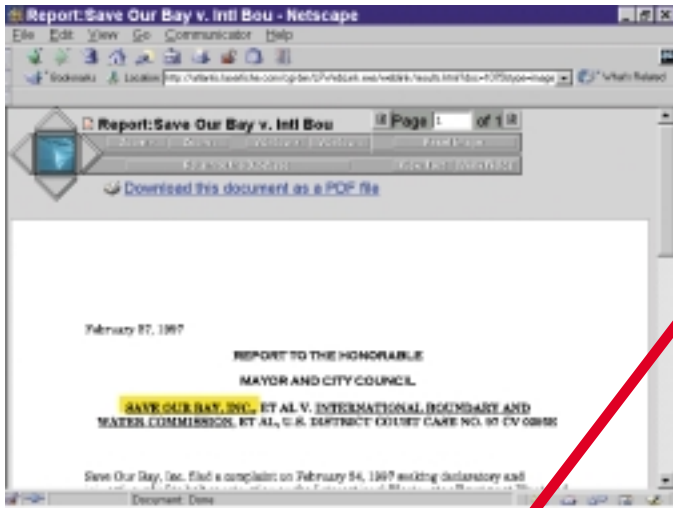
Ready, Set, Scan!

Once your office's documents have been scanned or imported into the LaserFiche document imaging system, your work is practically done. LaserFiche makes it easy to store and organize huge volumes of documents. The simple-to-set-up folder structure can be modeled on your existing filing system. This finger-tip organization refines the way you manage your records.



On Your Way with WebLink

Acting as an electronic courier between the LaserFiche document imaging system and any Web browser, LaserFiche WebLink delivers actual images — not just text like other programs. Anyone can view the image, text, or template of a document. To balance the trade-off between high resolution images and fast file transport, LaserFiche WebLink initially sends a highly compressed image so that the reader can read the document quickly. More detailed images can then be retrieved with the click of a button.

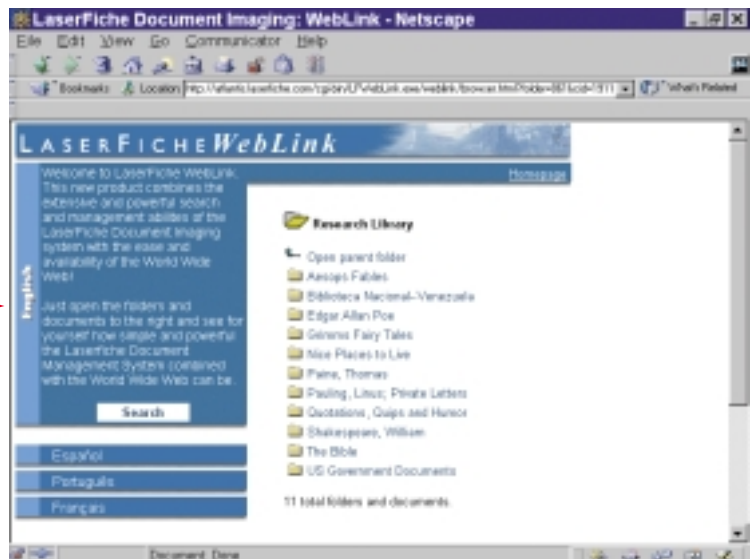


No More Hide... Just Seek



With LaserFiche WebLink, your audience searches for the documents themselves using our award-winning search engine. They can view and print the results-saving you and your staff countless hours. They can also browse through folders and select documents by name. Or, they can perform full-text searches to locate the exact document immediately. Fuzzy logic, Boolean, and even template field searches can also help pinpoint hard to find information. Lines of context display how the word or phrase is used — before retrieving the entire image.

Secure Passage for Documents



The security of your archives is never in question. LaserFiche's security methods even pass the stringent requirements for clients like the CIA and the United States Army, Air Force and Navy. You decide what folders and documents can be viewed via the Internet or your intranet. You can even redact portions of your document for additional security. Because LaserFiche WebLink translates the document pages into Web pages, the public never comes in direct contact with the original files. There is no way for them to modify text or images. This additional level of security gives extra peace of mind.

“The package is a dream to use.”



L A S E R F I C H E *WebLink*



About the Application

LaserFiche WebLink is a gateway between a LaserFiche database and the Internet or an intranet. It acts as an intermediary between almost any HTTP server running on Windows NT and a LaserFiche server running on either Novell NetWare or Microsoft Windows NT.

Technical Specifications

Porting the LaserFiche database to the Web requires three parts:

1) LaserFiche Server (NLM or NT)

LaserFiche NT Server

CPU: PENTIUM 120 MHz (or higher)

Memory: Minimum 64 MB RAM

LaserFiche NLM Server

CPU: Pentium 120 MHz (or higher)

Memory: Minimum 64 MB RAM

2) LaserFiche WebLink

Requires Windows NT Server 4.x
(must be the same machine as the 3rd Party
Web Server)

CPU: Pentium 120 MHz (or higher)

Memory: Minimum 40 MB RAM

3) 3rd Party Web Server

Requires Windows NT Server 4.x
(must be the same machine as LaserFiche
WebLink)

CPU: Pentium 120 MHz (or higher)

Memory: Minimum 40 MB RAM

Viewing images on the Internet can be performed by any browser (following Netscape 2.0) that can display images and tables. Documents can be searched and viewed immediately without needing to load special client software or Java applets.

LaserFiche Family of Products



LaserFiche CD Viewer

View & search documents on CD.



LaserFiche Notebook

A portable standalone allows you to view documents on the road.



LaserFiche Executive

Our most popular fully-equipped standalone system.



LaserFiche Plus

Publish CDs royalty-free to easily distribute documents.



LaserFiche LAN

Ideal for small workgroups.



LaserFiche Client-Server

Our powerhouse product suite maximizes document sharing on the network.



LaserFiche Enterprise

Client-server architecture supports multiple servers and databases.



LaserFiche WebLink

Publish paper documents on the web and view them with any browser.

For more information:

Voice: 310-793-1888

Fax: 310-793-8531

Web: <http://www.laserfiche.com/weblink>

E-mail: info@laserfiche.com



L A S E R F I C H E

a division of Compulink Management Center, Inc.

2000 Mariner Avenue

Torrance, CA 90503

U.S.A.